



WHY

Today, over one billion people need an assistive technology (AT), yet over 900 million people (90%) do not have access to the wheelchairs, eyeglasses, hearing aids, prosthetics, and other life-changing AT they need

Lack of access means that individuals and their families bear significant and often life-threatening consequences, including:

- **Isolation and exclusion** from education, work, family, and community life
- **Poorer health outcomes** including premature death, deteriorating mental health, chronic health conditions, and other secondary health complications
- **Increased costs and lower incomes**, leading to higher risks of poverty and unrealised economic potential from an individual to a country level

Progress in accelerating access to AT is slow and sporadic, and investment is uncoordinated

- **Supply and demand for AT products and services are limited** by numerous barriers caused by ineffective policies, insufficient financing, inadequate data, public stigma, and lack of empowerment of AT users, among others
- **Advances in technology are changing** the landscape, but often these innovations do not reach those most in need

Drivers

- Appropriate design
- Availability
- Affordability
- Assured quality

Drivers

- Users
- Service providers
- Countries

Barriers

- Weak service delivery system
- Manufacturing and procurement costs
- Complex distribution and logistics
- Lack of and/or untrained workforce
- Absence of service standards and guidelines
- Non user-centric innovation

Barriers

- Lack of awareness for the need for AT
- Inadequate funding
- Lack of national policies and insurance
- Inappropriate products and services
- Fragmented procurement
- Stigma



This Partnership will revolutionise access to AT, which is necessary to achieve Universal Health Coverage and all of our ambitious Sustainable Development Goals, especially:



SDG 1: **Eradicate poverty** in all forms and dimensions, targeting the most vulnerable



SDG 3: **Ensure healthy lives and promote well-being** for all



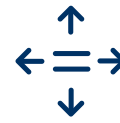
SDG 4: Ensure inclusive and equitable **quality education for all**



SDG 8: Promote inclusive and **sustainable economic growth and productive employment**



SDG 9: Promote sustainable industries, particularly investing in **scientific research and innovation**



SDG 10: **Reduce inequality** within and among countries



SDG 17: Enhance **North-South and South-South cooperation** by supporting national plans

In addition, the Partnership will advance the 2006 resolution implemented by the Convention on the Rights of Persons with Disabilities (particularly through its focus on facilitating international cooperation) and the 71st World Health Assembly's 2018 resolution on improving access to Assistive Technology

KEY FACTS

Assistive technology (AT) is an umbrella term covering the systems and services related to the delivery of assistive products and services

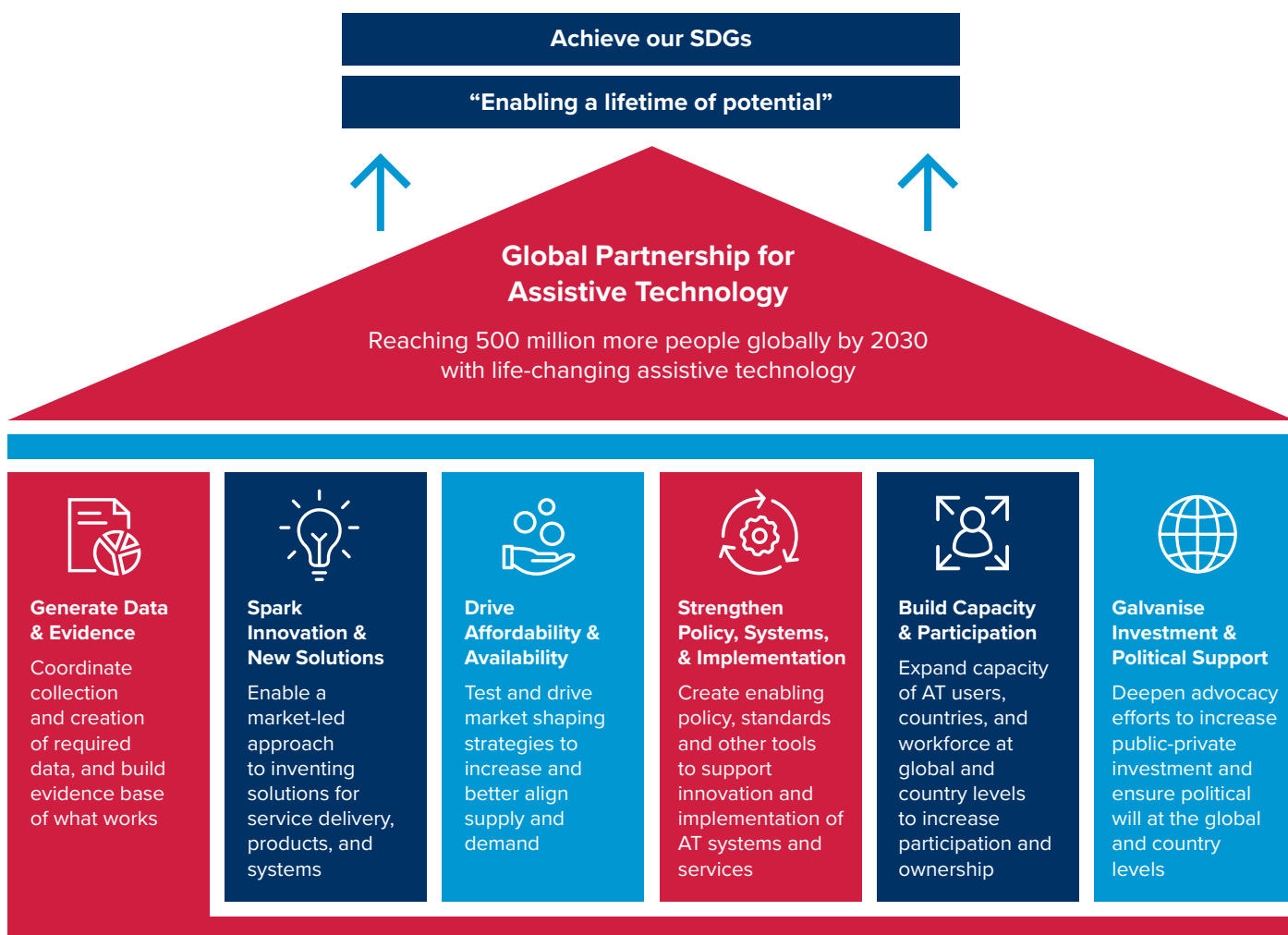
Access to AT is crucial for people with loss of function, people with disabilities or noncommunicable diseases, and the aging population

For example, today **970 million** are in need of eyeglasses and low vision aids, **94 million** are in need of hearing aids, and **75 million** are in need of wheelchairs

By 2050, over two billion people will need some form of AT in order to go to school, get a job, or play a full role in their families or communities

WHAT

The Partnership will catalyse change, amplify existing work, and coordinate access to AT. We are bringing together stakeholders to leverage resources and break down barriers across 6 strategic priorities



Why the Partnership is Unique

- Creating a **cross-sector Partnership for AT** for the first time, which is crucial for **catalysing** change in an under-resourced and fragmented area
- Setting a **unified strategy and agenda**, coordinating stakeholders, advocating, mobilising resources, measuring and evaluating impact and progress, and sharing best practices
- Enabling partners who work in distinct sectors to **collaborate**, facilitating **complementarity, innovation, and capacity building**
- **Breaking down supply and demand barriers** in a systematic and coordinated fashion

HOW

Join the Global Partnership for Assistive Technology. We are seeking support from stakeholders across all sectors. We welcome partners who can contribute to delivering our mission

- The Partnership requires funding and seeks major backing from global donors, private sector, and civil society to add to the funds provided by DFID and USAID
- It also welcomes governments, delivery partners, in-kind donors, and technical experts, and encourages knowledge sharing and alignment of programming

An Interim Forming Committee will guide the Partnership through the incubation and development phase until the structure, operating model, and detailed strategic plan is finalised

WHO

The Interim Forming Committee to date includes:

